

# **ORGANIZATION PROFILE**



**Women Initiative for Sustainable Empowerment**



P.O Box 12121 Kampala



+256 772 470714, +256 701 056354



[info@wise-empowerment.org](mailto:info@wise-empowerment.org)



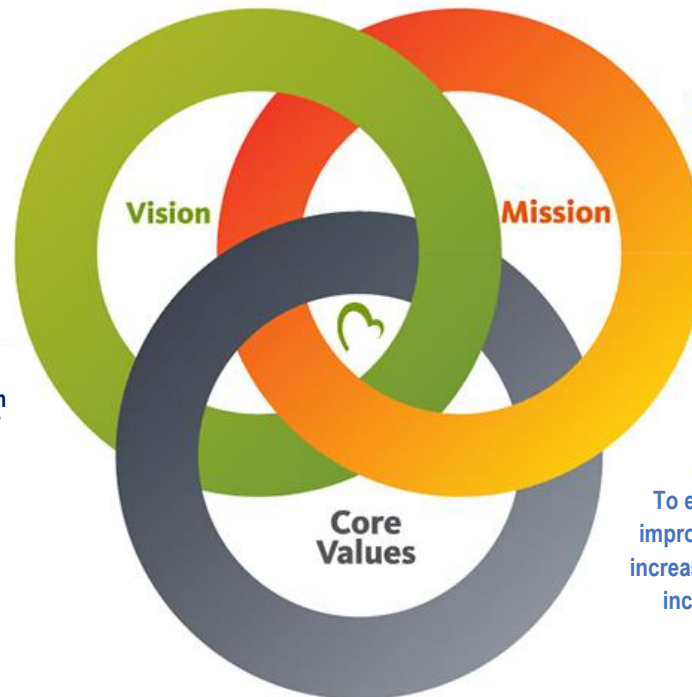
### Vision

A Harmonious society where women are fully empowered, capable of contributing to equitable growth of their households.

### Values

The values of WISE can be summarized in the acronym SELECT standing for:-

- Sustainability
- Empowerment
- Love
- Excellence
- Commitment
- Teamwork



### Mission

To implement highly effective and sustainable approaches that strategically empower women to attain their full potential within their communities.

### Goals

To empower women, to promote & improve access to health services, to increase girl child school enrolment, to increase food production & food security

## Program Areas:

### **Women and Gender**

*Goal: To empower women and eliminate gender discrimination*

- Women Empowerment
- Girl Empowerment
- Leadership Skills
- Livelihoods Improvement
- Gender Equality

### **Community Health**

*Goal: To promote and improve access to health services in rural communities.*

- HIV/AIDS Prevention, Care and Capacity Building
- Malaria Prevention
- Reproductive Health
- Health awareness
- Sanitation
- Safe drinking water
- Mother and child health

### **Sustainable Agriculture and Environment**

*Goal: To increase food production & food security and promote efficient management of natural resources*

- Organic farming
- Environmental protection
- Soil and waste management
- Value addition
- Climate change adaptation
- Energy saving stoves

### **Education**

*Goal: To increase enrolment and retention of the girl child in school*

- Girl Child Education
- Early Childhood Development
- Functional Adult Literacy
- Enable Continuation of Education

## Why we exist:

Uganda is one of the youngest countries in the world, with about 85 per cent of the population living in rural areas of which 73.3 per cent are engaged in subsistence agriculture (UBOS 2009). In addition to supporting livelihoods, the agriculture sector is driven mainly by women, yet they are consistently excluded from important decision-making processes that affect them.

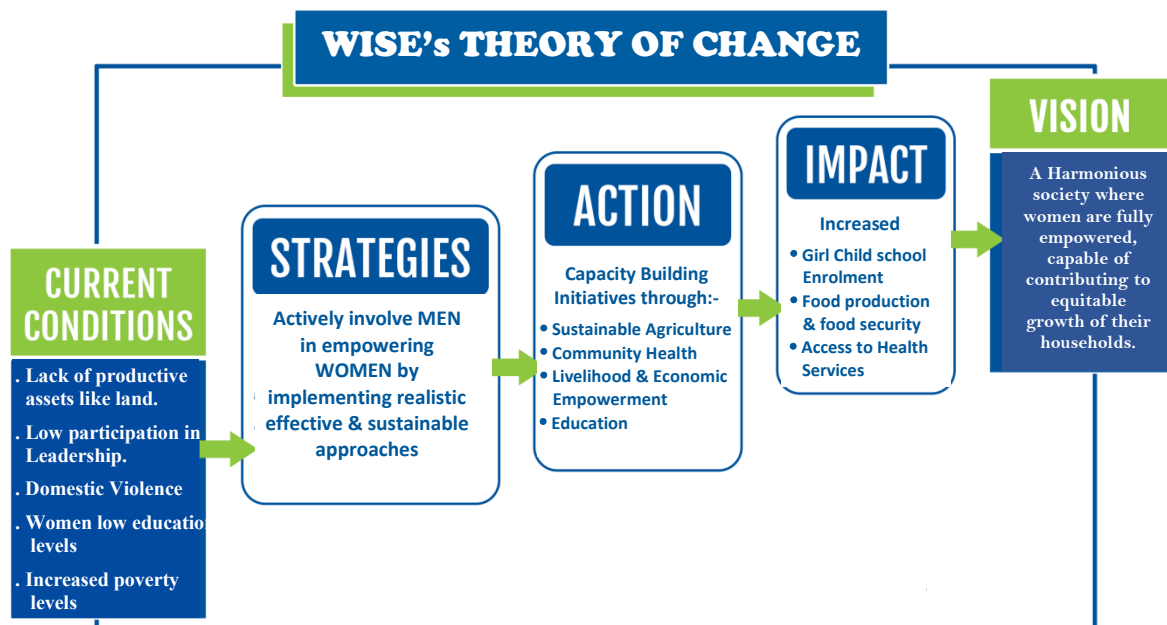
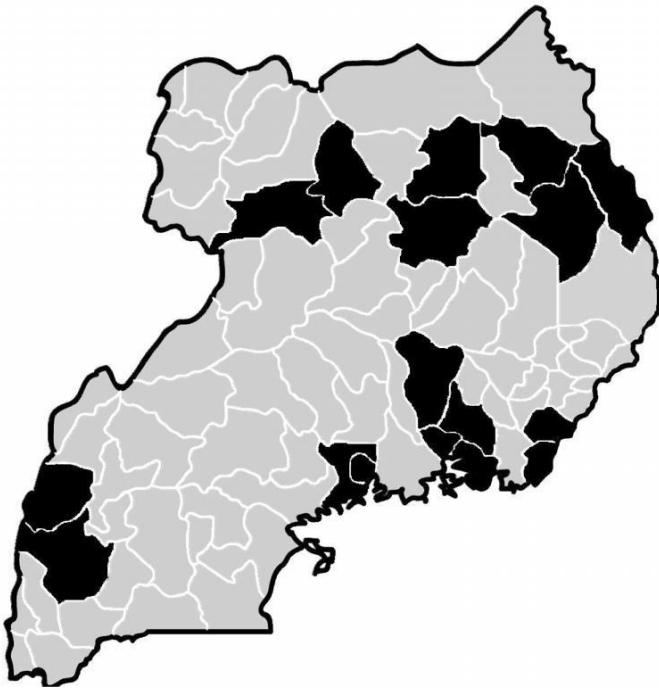
WISE believes that women are a great asset to the development of its nation; therefore, with the right guidance and support using an integrated rural development approach they can make a significant and tangible contribution to creating the conditions within which the rural poor and especially women and youth can address their livelihood needs.



## Our Approach:

WISE applies a holistic, bottom-up, integrated rural development strategy among the various target communities in Uganda. The Organization is actively working towards the sustainable empowerment of women and the society as a whole.

Our approach is focussed on actions that align to women empowerment and that build self-reliance of our local partners targeting areas of social development of rural communities for a better future in Education, Community Health, Sustainable Agriculture, Environment and Women Economic Empowerment whilst improving their livelihoods.



WISE's Theory of Change is centred on a holistic and sustainable empowerment. We believe that communities are self-sustainable when organised. Our Theory of Change is rooted in three main pillars;

- Empowering women by deliberately involving men.
- Mobilizing people to become authors of their own change.
- Partnering with development centered Institutions, Organizations and Governments.

## ***Sustainable Agriculture and Environment***

***Goal: To increase food production & food security and promote efficient management of natural resources***

### **Objectives:**

- Enable farmer groups sustainable modern agricultural practices.
- To promote organic farming practices among the farmers.
- To increase the participation of women in commercial farming.
- To enable communities identify and effectively utilize the natural resources around them.
- To promote environmental protection
- To promote efficient energy utilization
- 

### **Activities:**

- Value addition
- Provision of extension services
- Supply of Agro-inputs
- Seed Multiplication
- Trainings on environmental management
- Tree planting and waste management
- Clean energy through energy saving stoves, briquettes and bio gas.



## ***Community Health***

***Goal: To promote and improve access to health services in rural communities.***

### **Objectives:**

- To increase access to health services
- To reduce child mortality
- To improve maternal health

### **Programs Under Community Health:**

**HIV/AIDS Prevention, Care and Capacity Building**

### ***Major Goal:***

To reduce the further spread of HIV/AIDS among the communities

***Activities:***

- Community mobilization and sensitization on HIV/AIDS related activities.
- Reducing HIV/AIDS Discrimination and Exclusion
- Training TBAs
- Training HIV/AIDS TOTs
- Provide the right information about HIV/AIDS
- Establish Youth clubs and link them to health care facilities for better support in HIV/AIDS services.
- Establish HIV/AIDS clubs in schools to facilitate young people's involvement as agents of change

**Malaria Prevention**

***Major Goal:***

To reduce maternal and infant mortality rates

***Activities:***

- Mobilization and sensitization of communities on malaria
- Proposal writing to raise funds to support the program.
- Distribution of mosquito nets
- Training pregnant women on malaria prevention

**Reproductive Health**

***Major Goal:***

To increase knowledge awareness on sexual reproduction and sexually transmitted diseases among the communities

***Activities:***

- Carrying out reproductive health talks in communities including schools.
- Improving health care

**Water and Sanitation/ Environmental Health**

***The sub programs of environmental health include;***

- Hygiene.
- Waste management.

***Major Goal:***

To create awareness on environmental factors that relate to health problems in communities.



### *Activities:*

- Carry out research on environmental issues that affect the communities
- Formation and maintenance of environmental health clubs in schools and communities.
- Mobilization and sensitization of communities on environmental health related issues.
- Protecting water springs
- Construction of pit latrines

## ***Women and Gender***

***Goal: To empower women and eliminate gender discrimination***

### **Objectives:**

- Women's Empowerment
- Girls Empowerment
- Eliminate Gender Discrimination
- Strengthening Capacity
- Promoting Reproductive Health
- Women's Economic Empowerment
- Poverty Alleviation
- End Child Marriage
- Improving Livelihoods



### **Activities:**

1. Ensure Health Services Access
2. Provide Sexuality Education
3. Provide Linkages to Economic Opportunities
4. Provide Youth Community Spaces
5. Identification and development of leadership skills among women
6. Creating self-employment for widows and single mothers



## ***Education***

***Goal: To ensure girls & boys have access to quality early childhood development care; building safe and inclusive learning environments for girls & young women***

### **Objectives:**

- To promote early childhood development
- To increase gender parity and enrolment overall
- Support the enrolment of out-of-school girls into primary school
- Ensure that girls make the crucial transition from primary to secondary school
- Developing Literacy Skills
- Educational Opportunity and Scholarship
- Enable the Continuation of Education

### **Activities:**

- Establish ECDs and Nursery Schools
- Train nursery teachers/care givers
- Equip ECDs with playing equipment and learning aides

